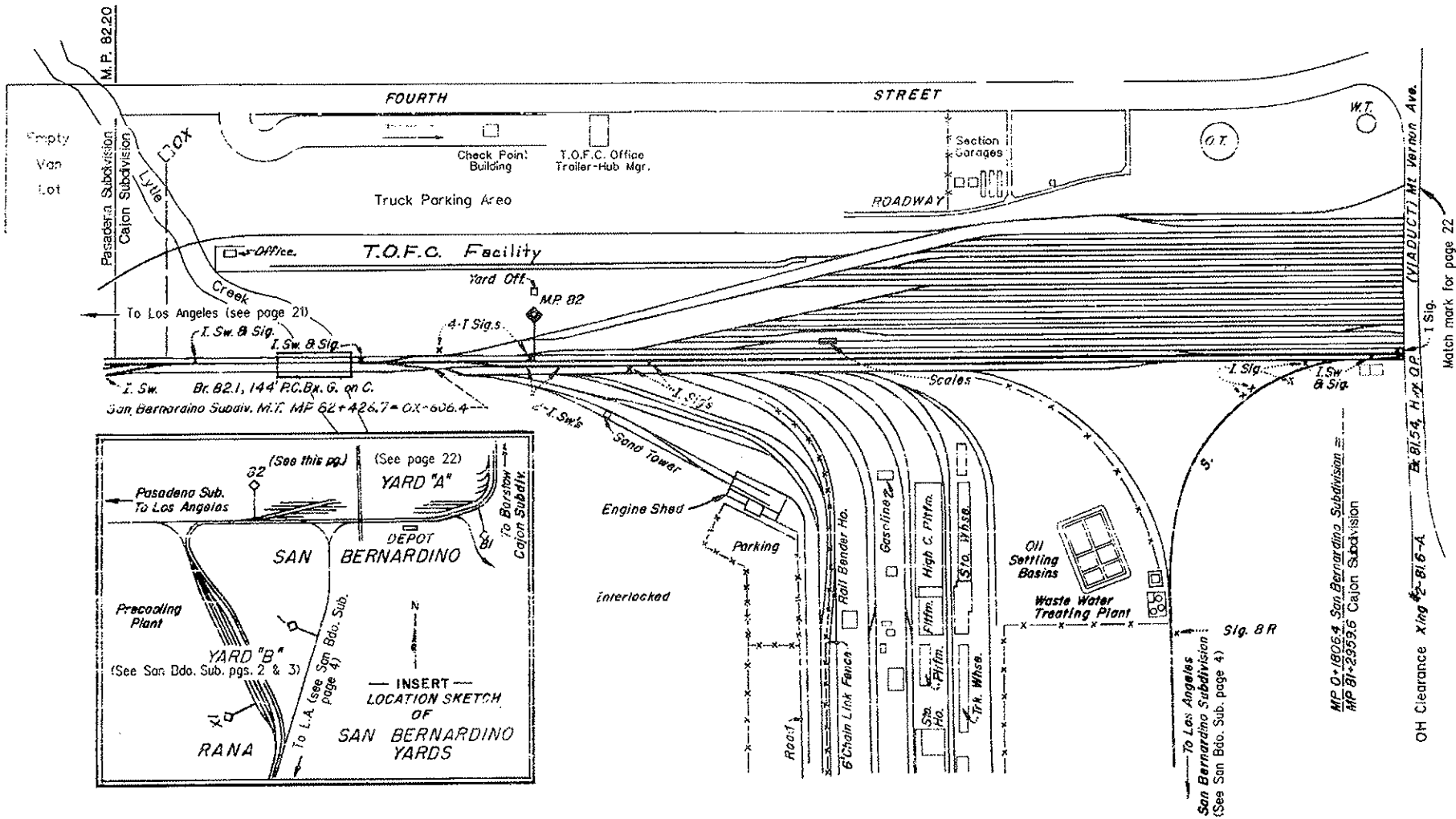
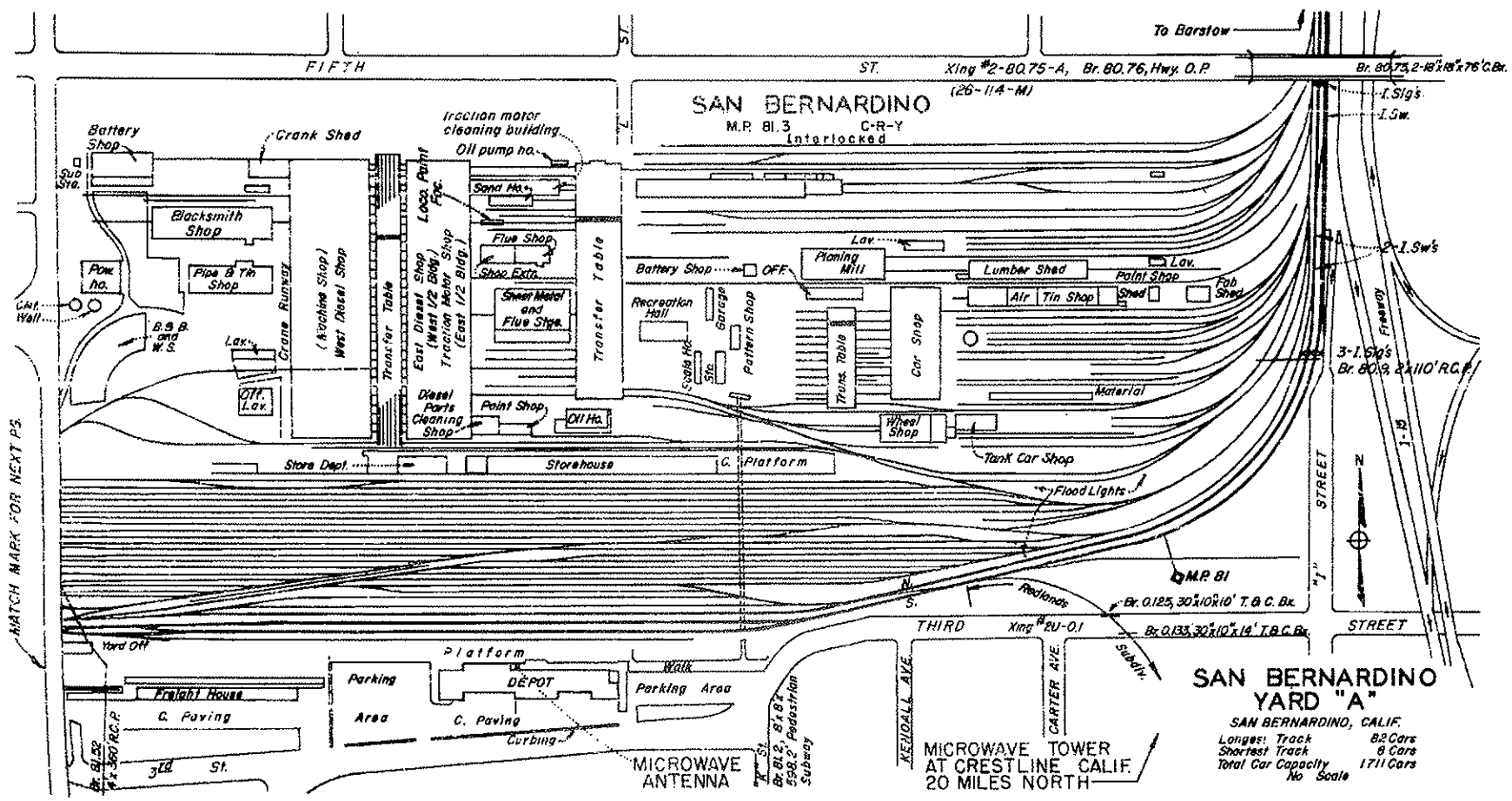


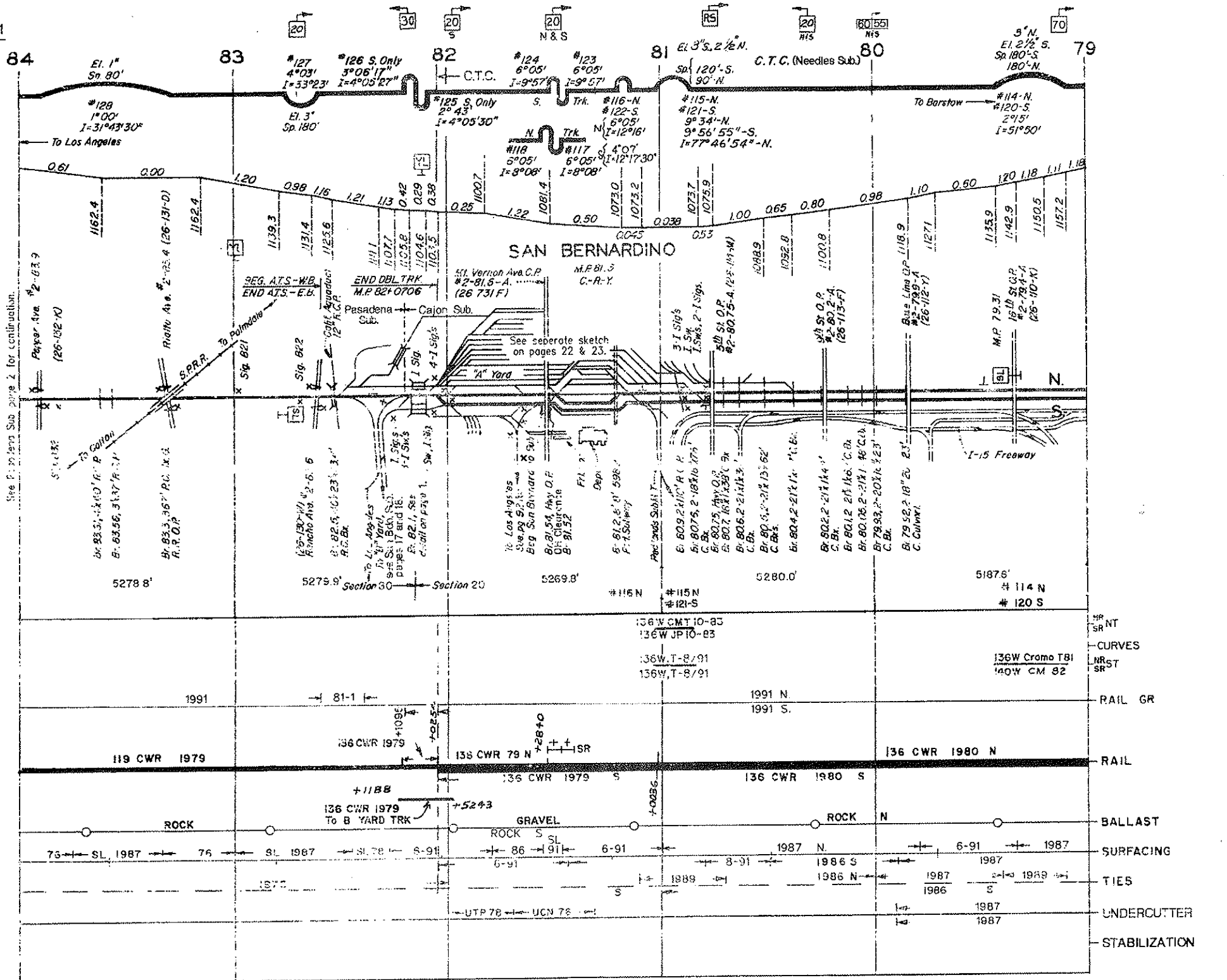
Intentionally Blank



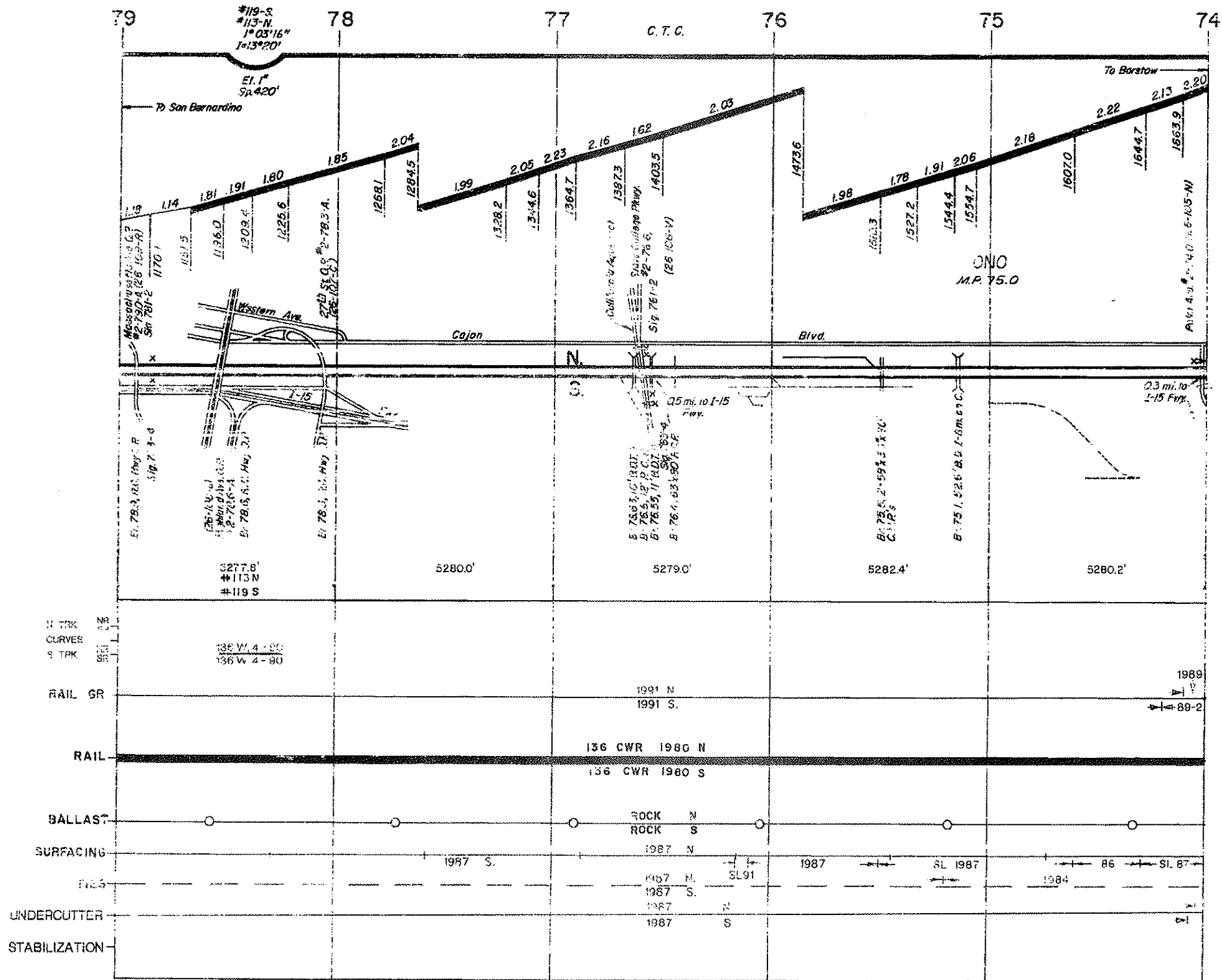


MATCH MARK FOR NEXT P2

SAN BERNARDINO YARD "A"
 SAN BERNARDINO, CALIF.
 Longest Track 82 Cars
 Shortest Track 8 Cars
 Total Car Capacity 1711 Cars
 No Scale

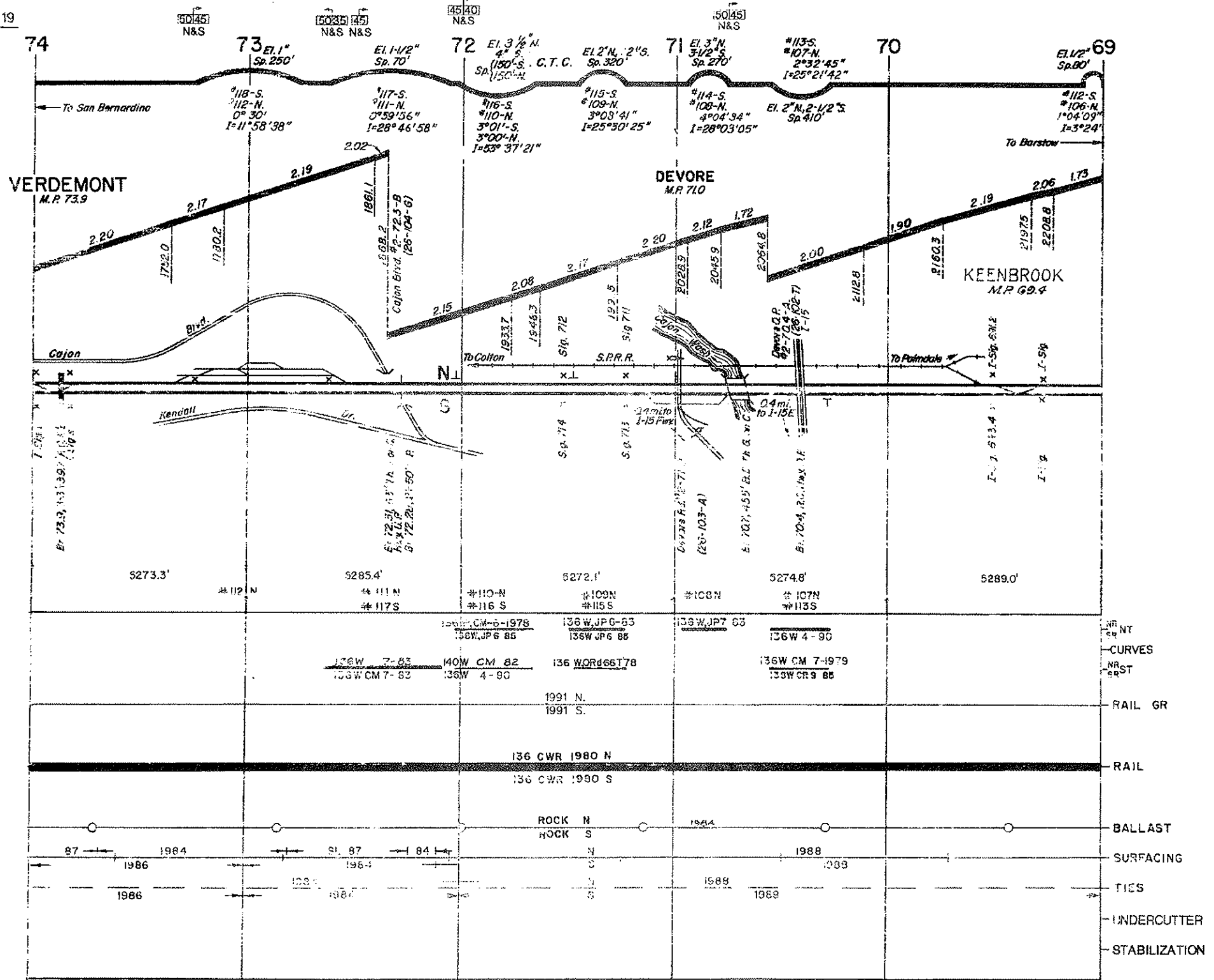


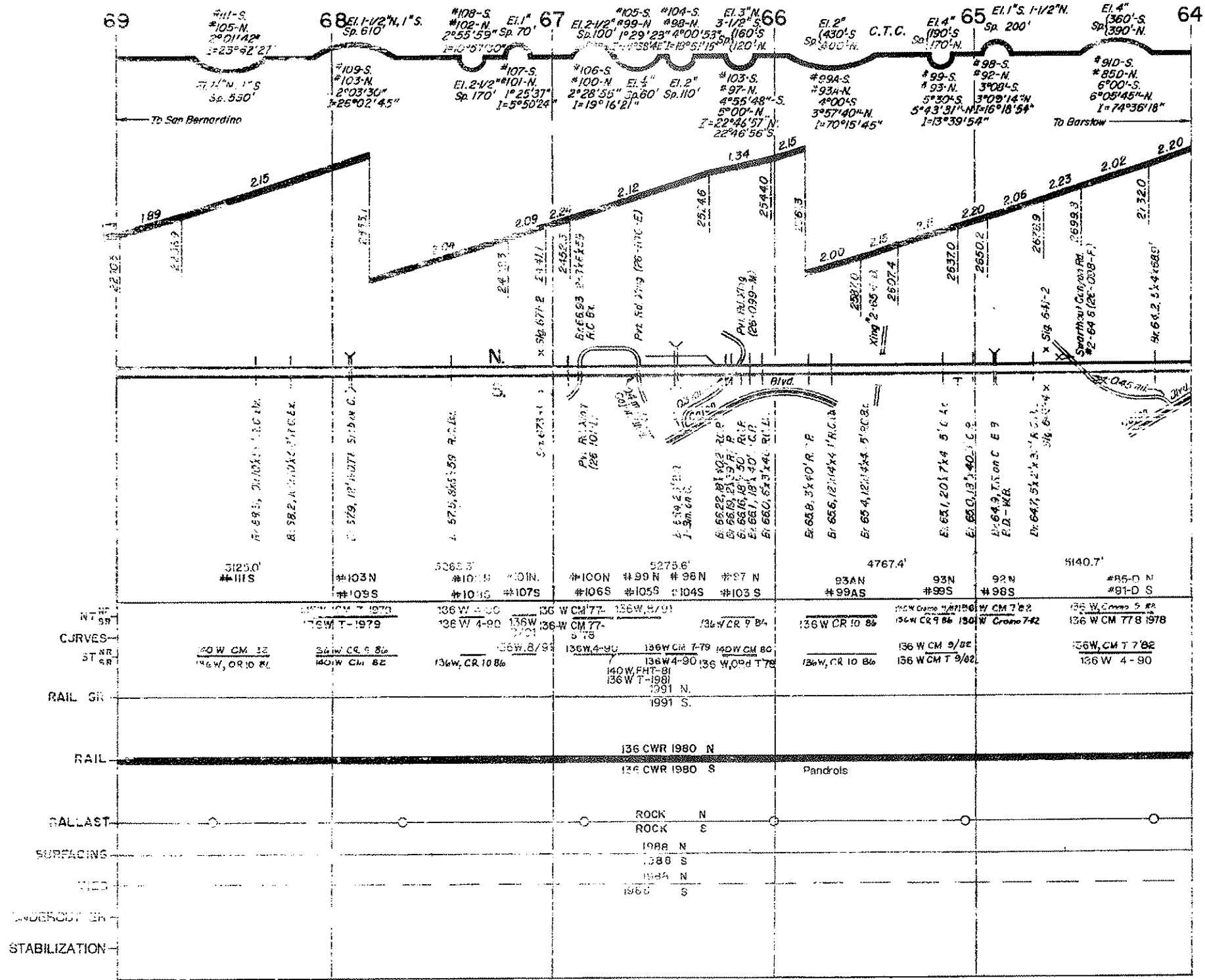
See P. 20 for Sub. page 2 for continuation.

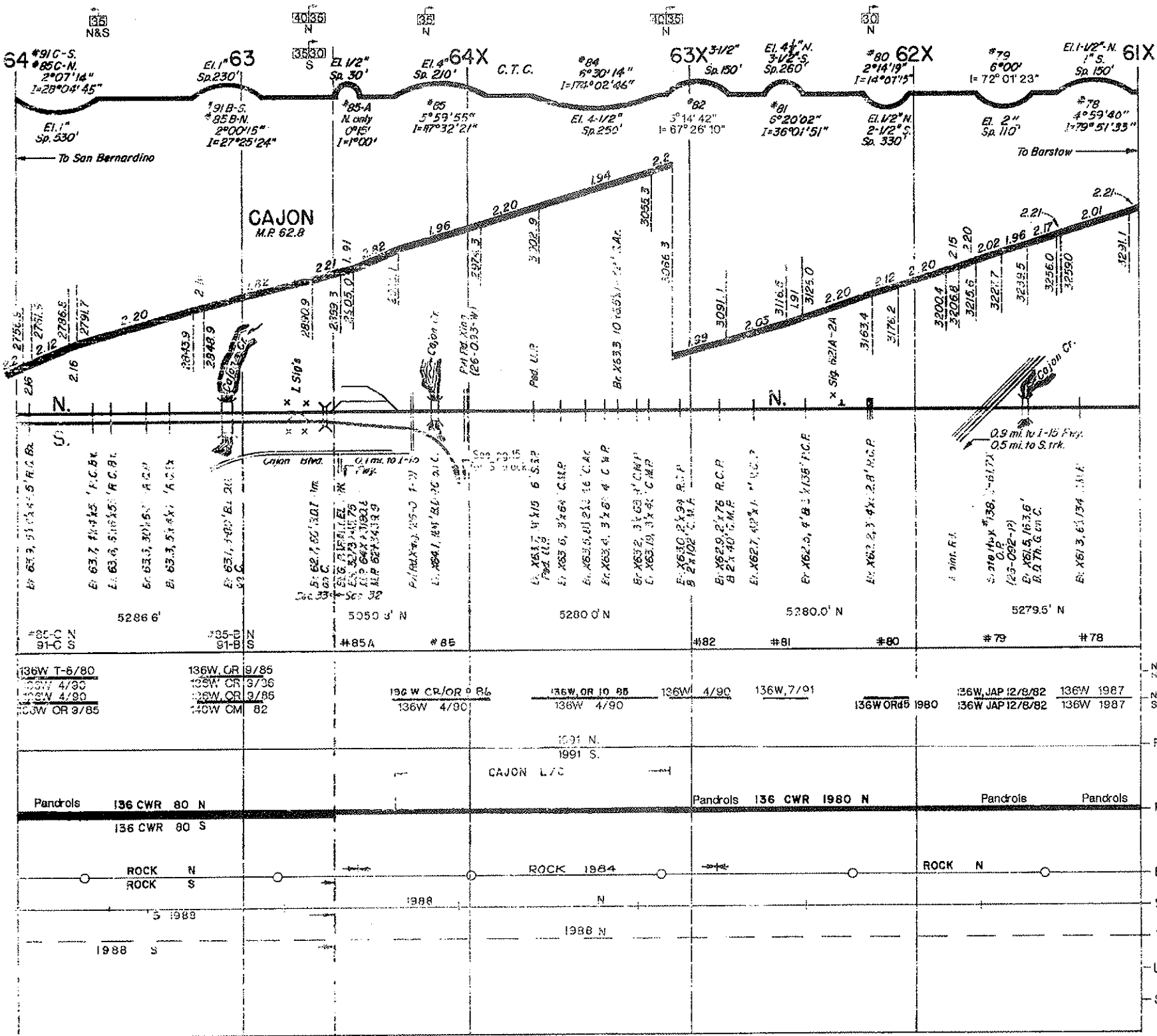


REVISED FEB. 1992

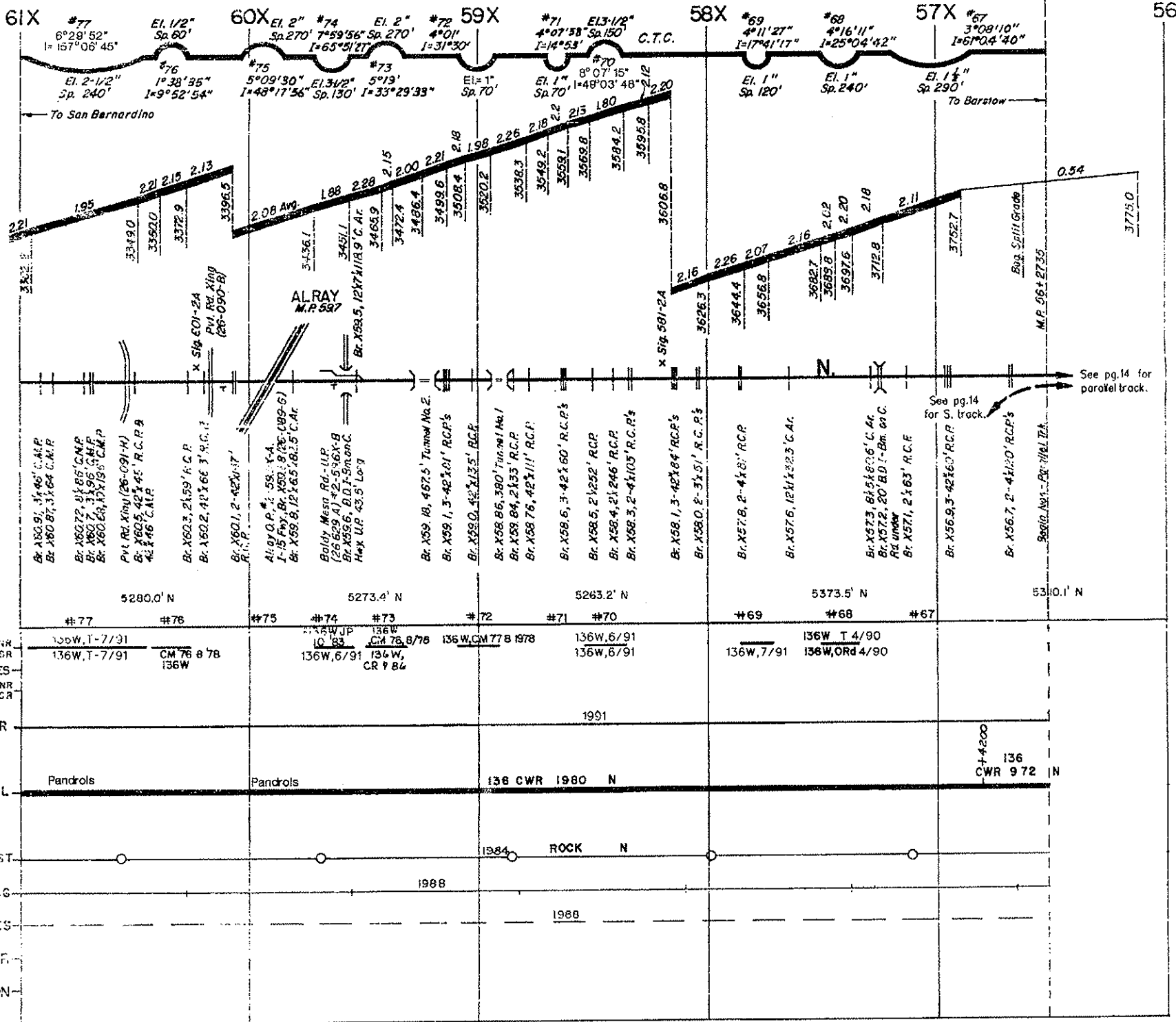
CAJON SUBDIVISION







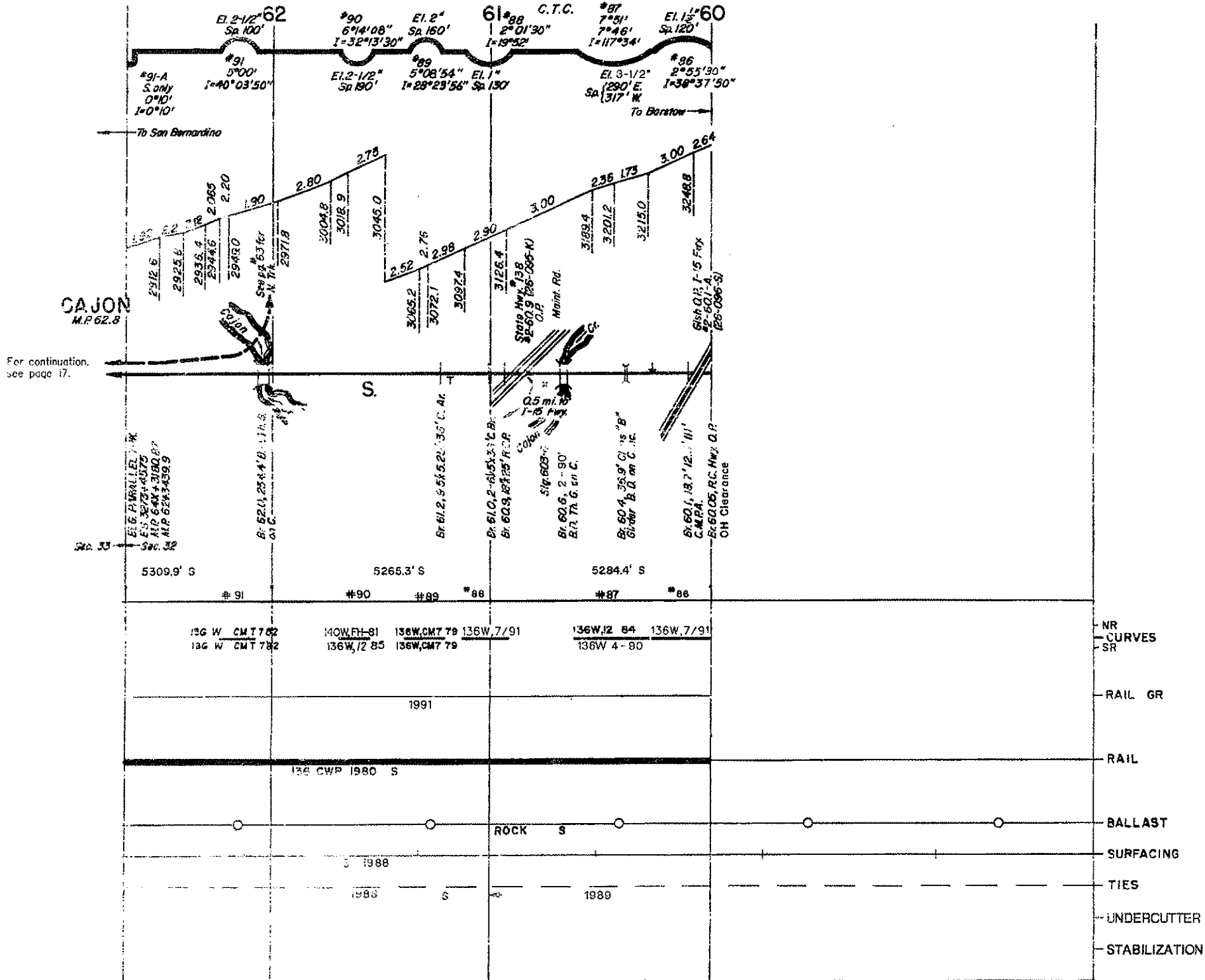
- NR N TRK
- CR CURVES
- SR S TRK
- RAIL GR
- RAIL
- BALLAST
- SURFACING
- TIES
- UNDERCUTTER
- STABILIZATION



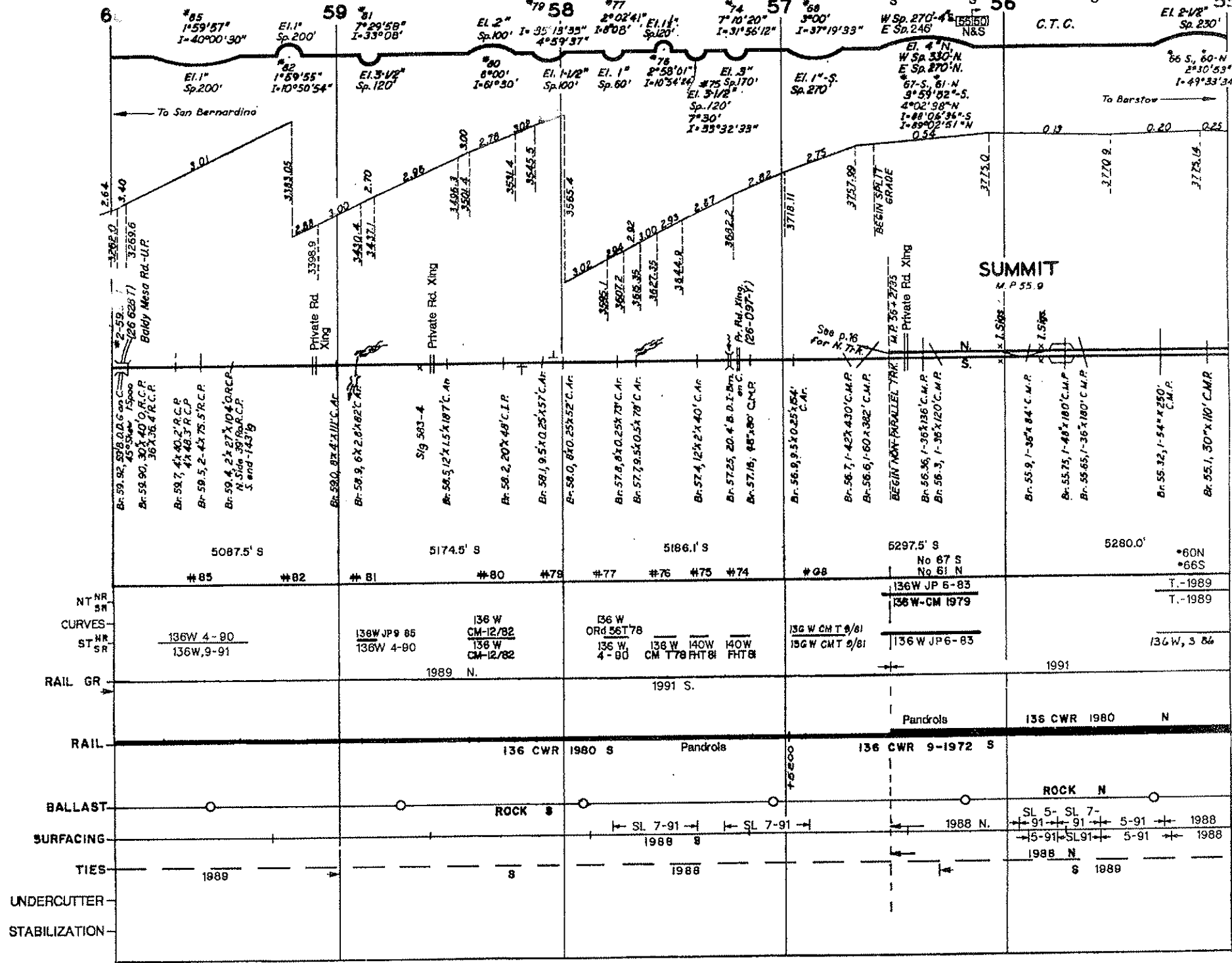
See pg. 14 for profile track.

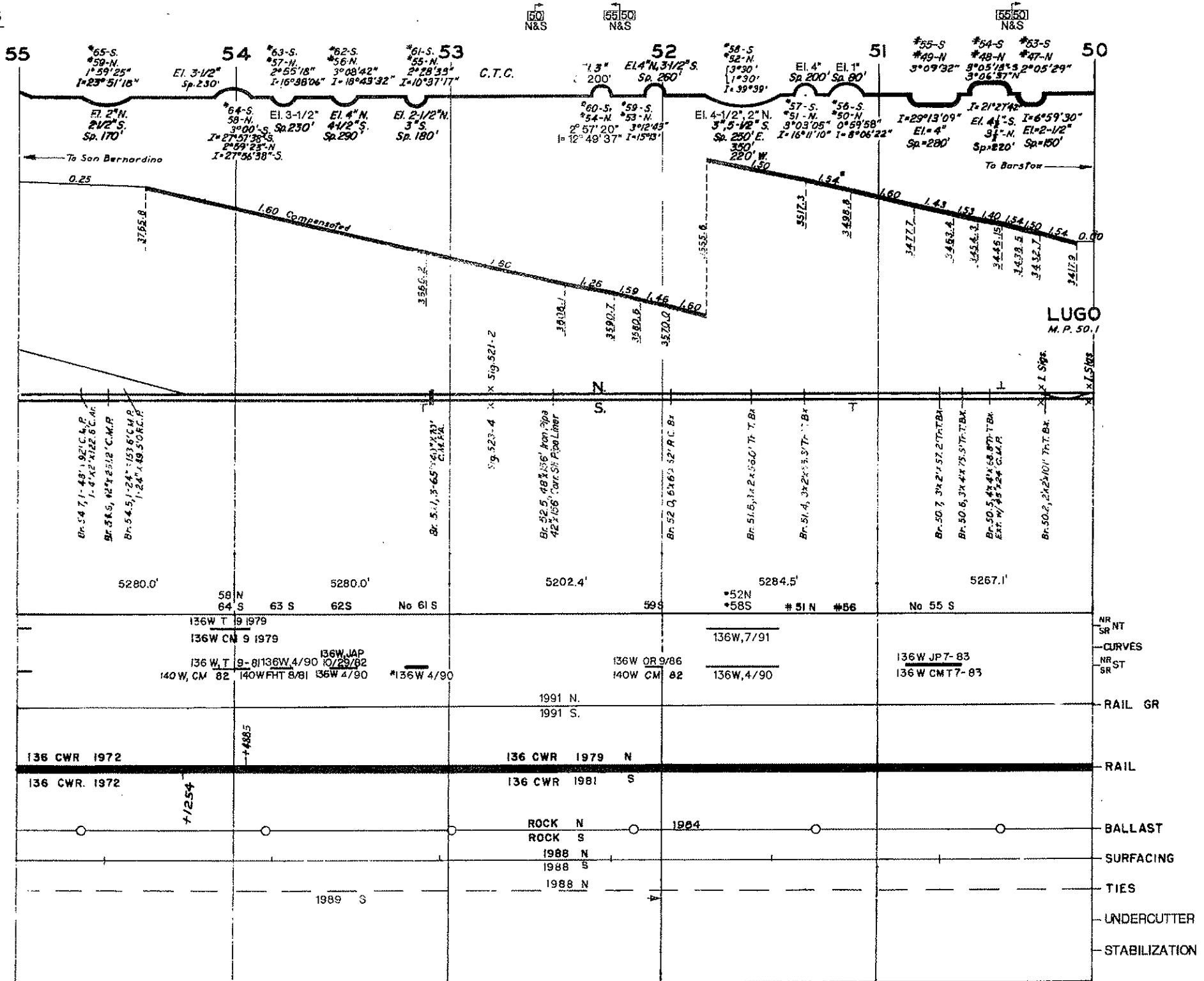
See pg. 14 for S. track.

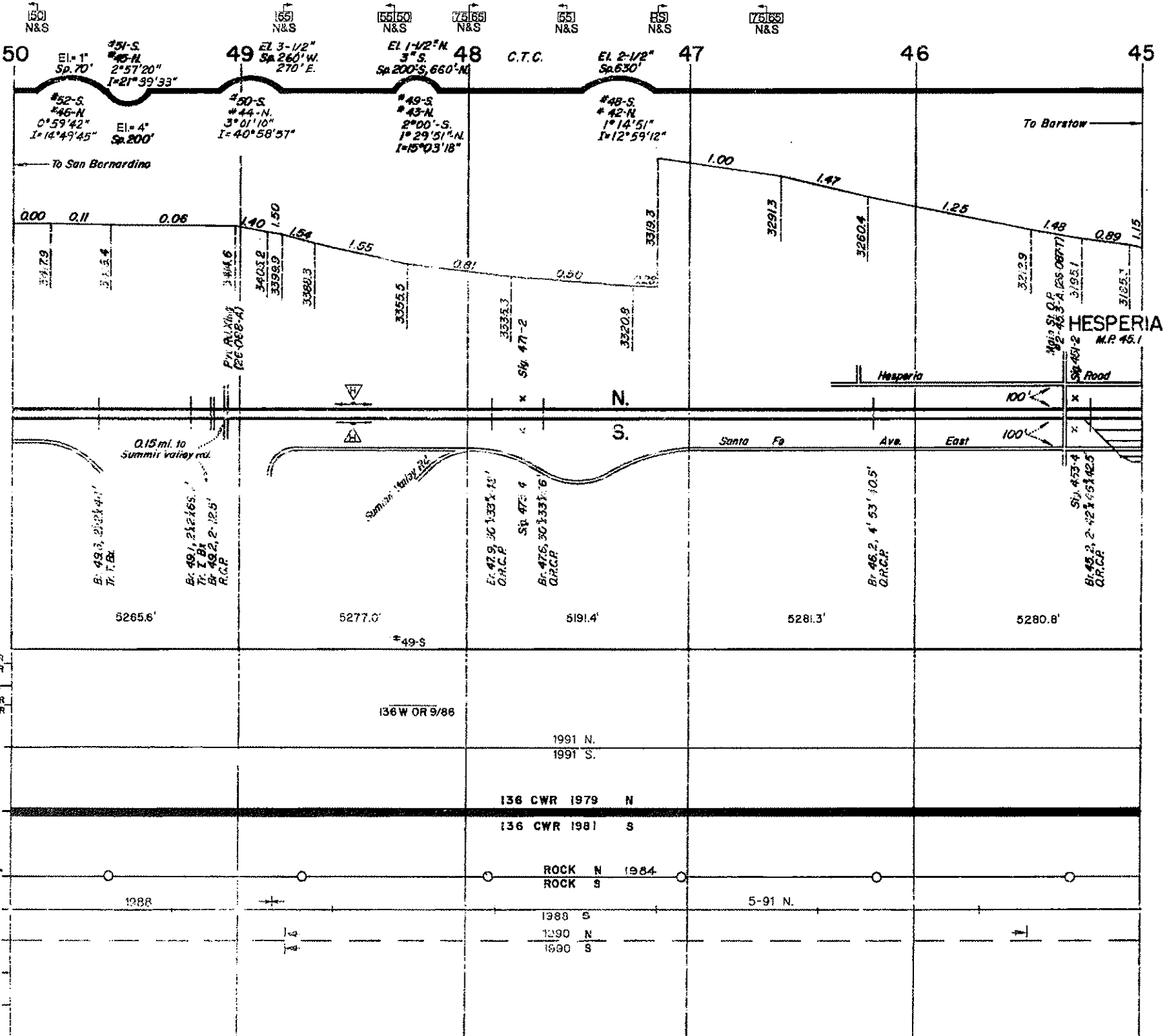
4035
N&S



For continuation, see page 17.



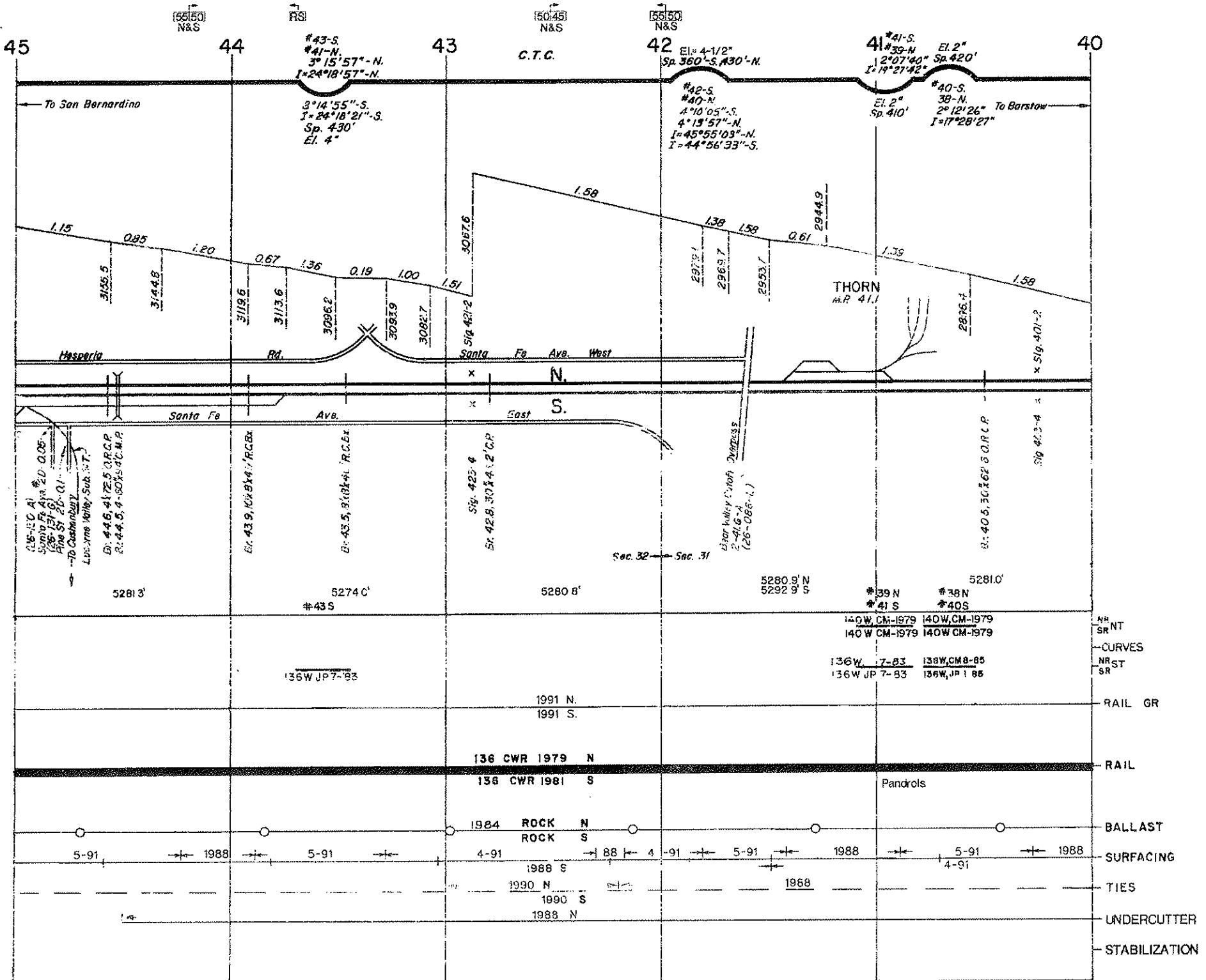


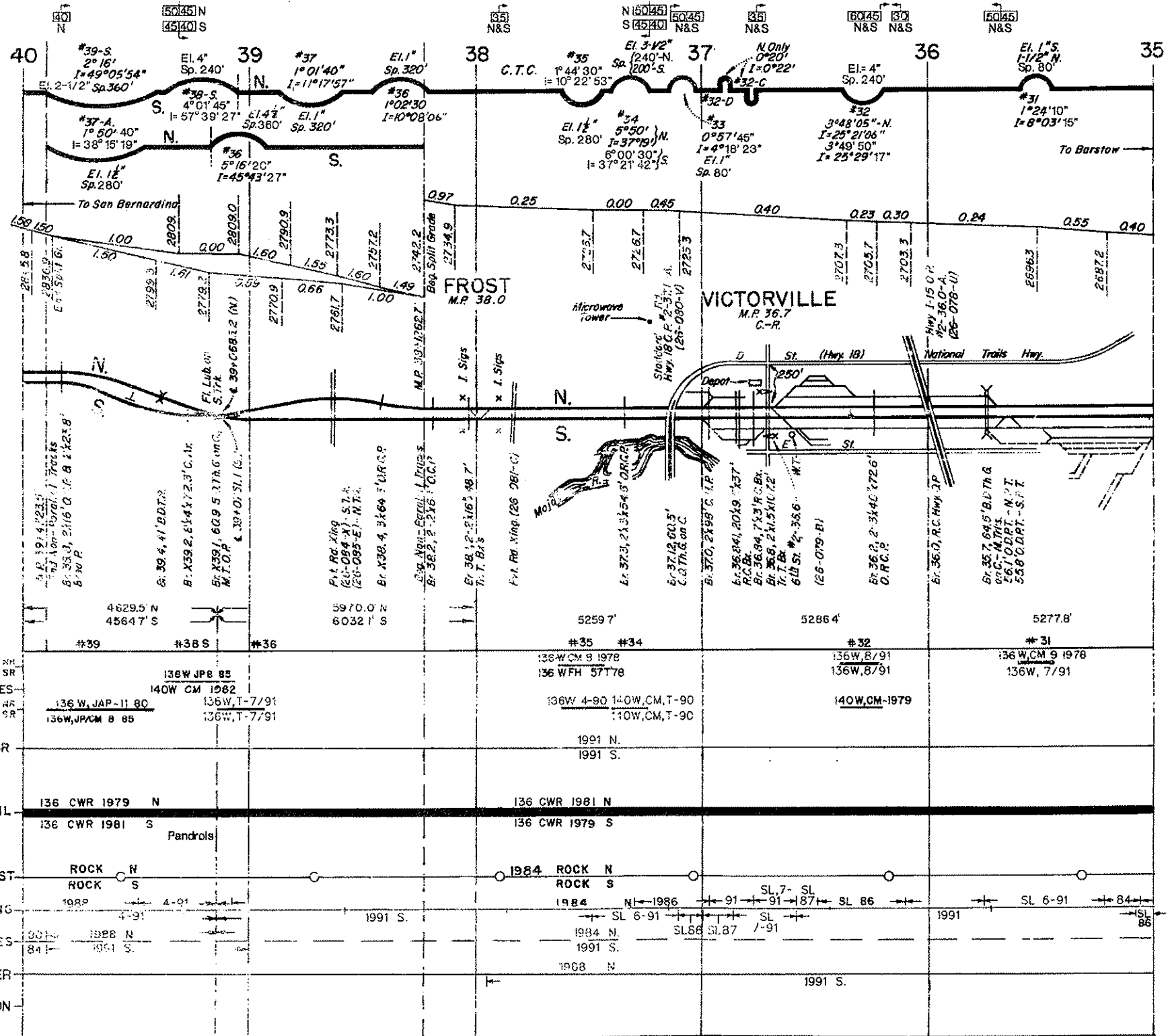


CURVES
 ST
 RAIL GR
 RAIL
 BALLAST
 SURFACING
 TIES
 UNDERCUTTER
 STABILIZATION

REVISED FEB. 1992

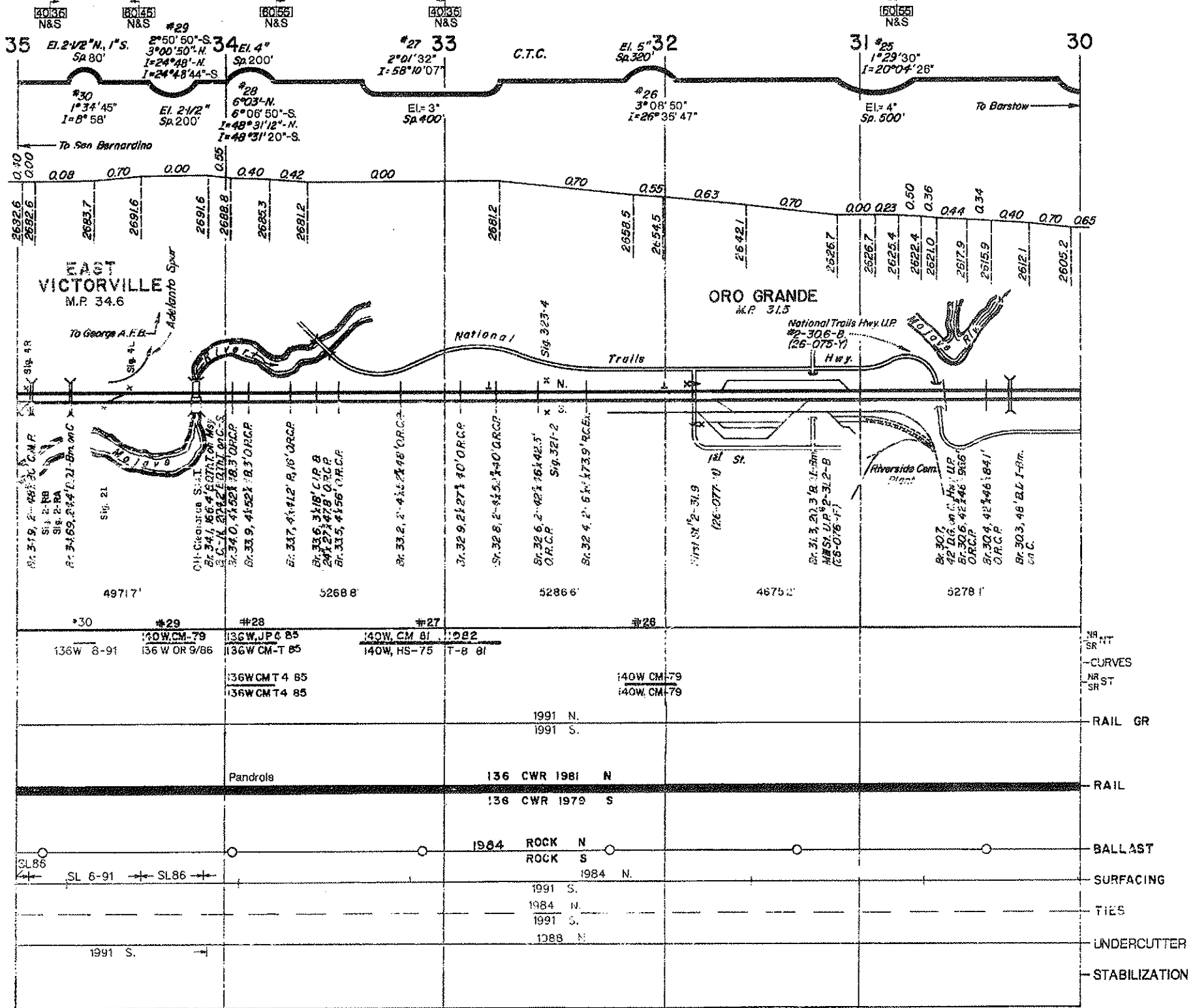
CAJON SUBDIVISION

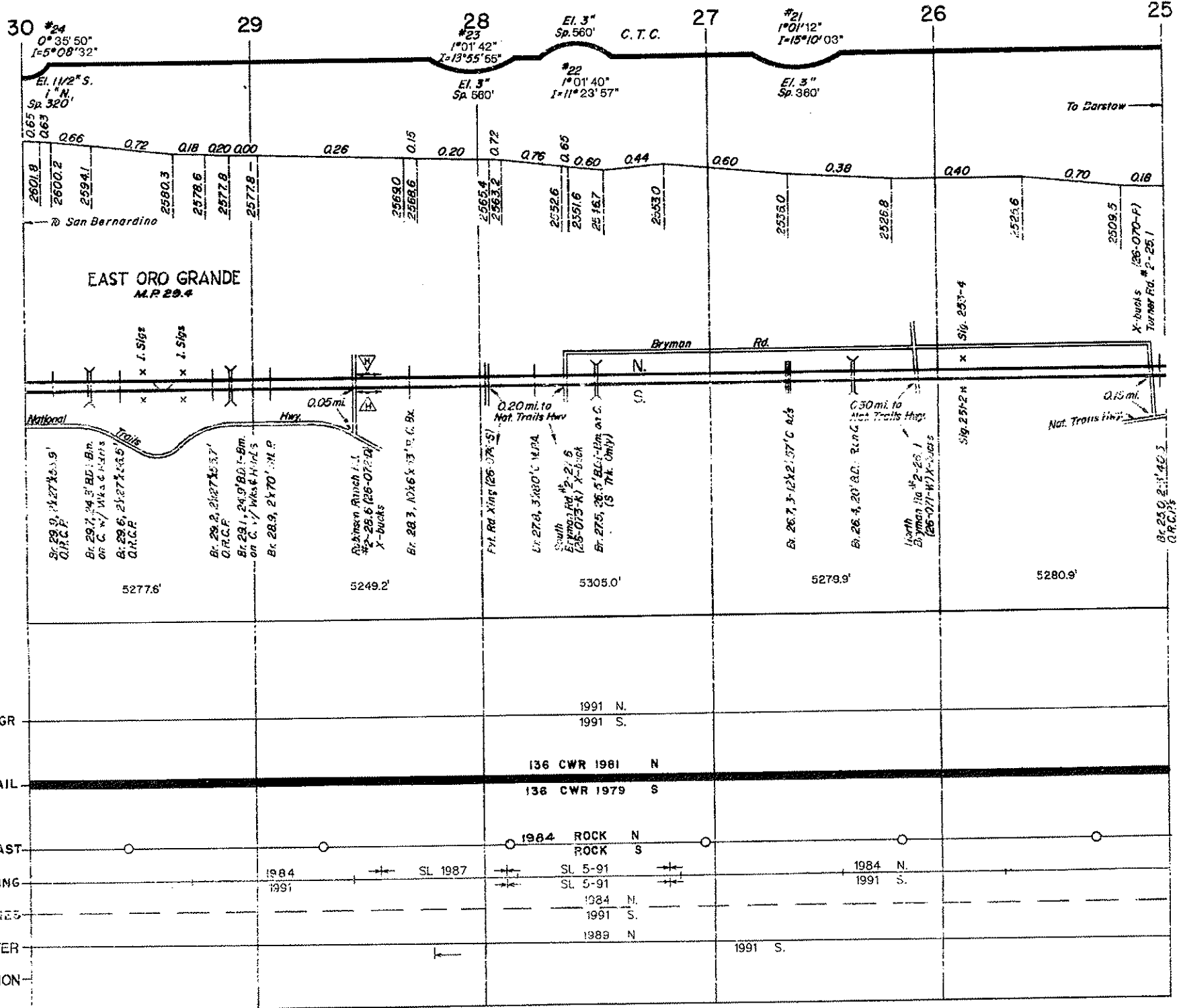




REVISED FEB. 1992

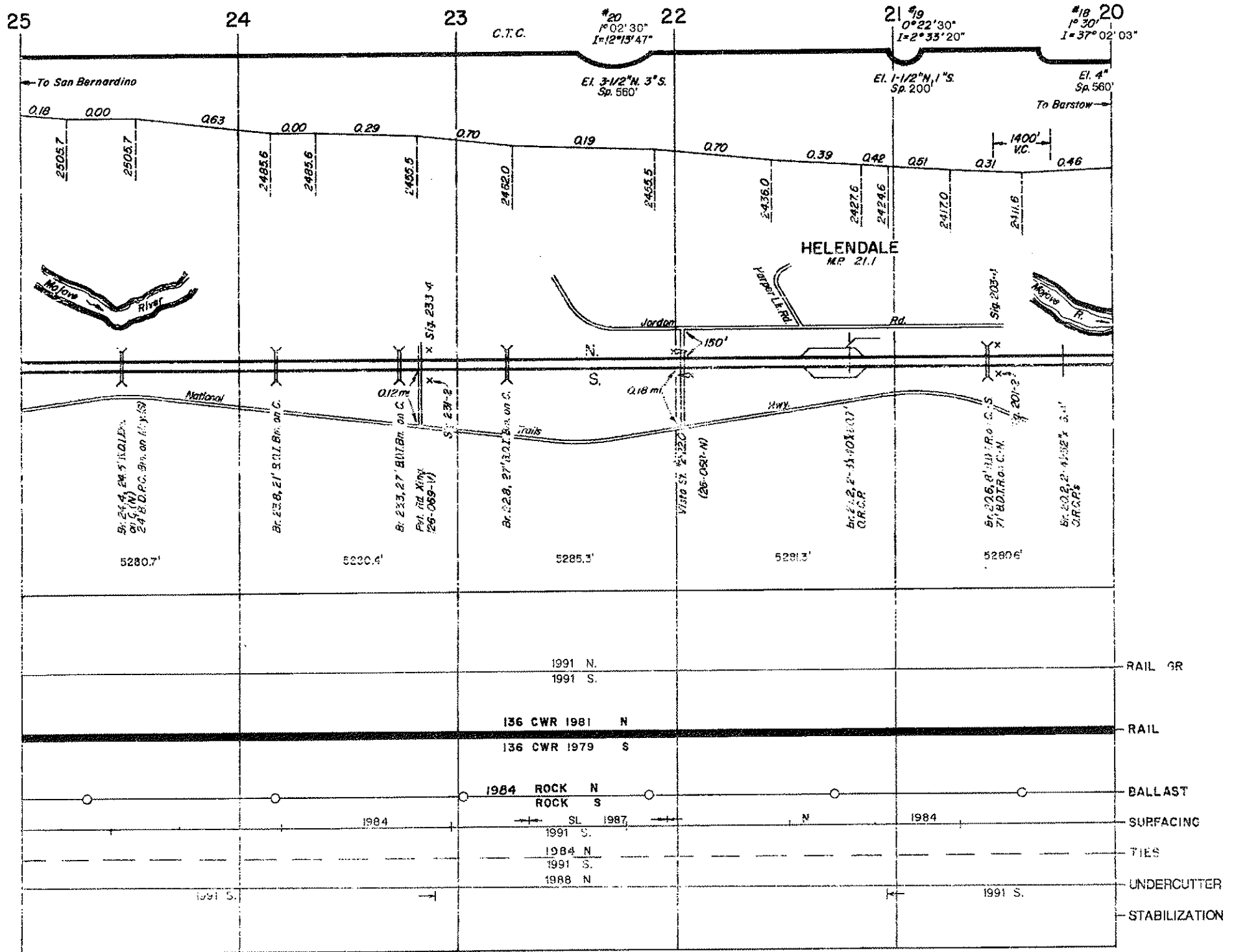
CAJON SUBDIVISION

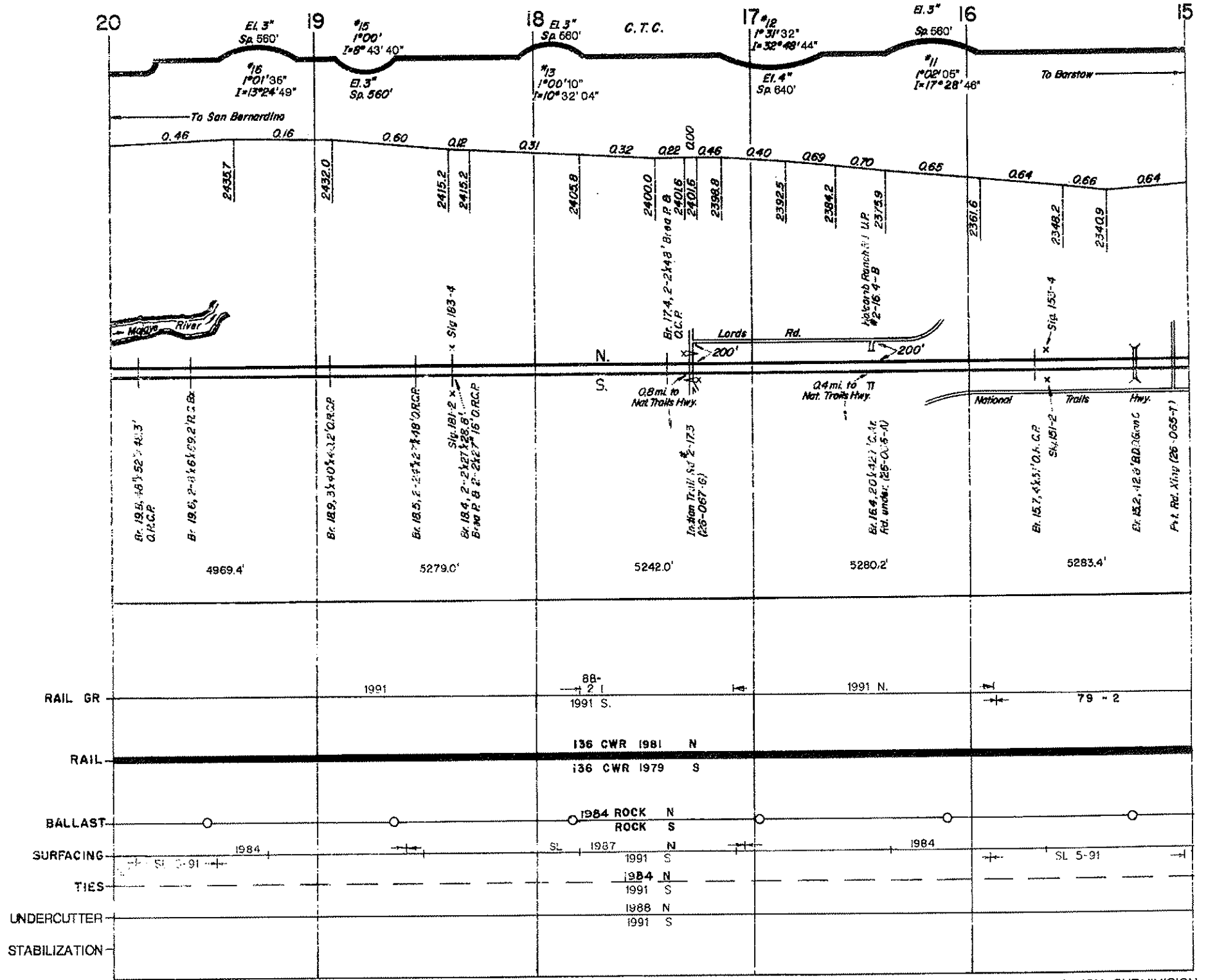




REVISED FEB. 1992

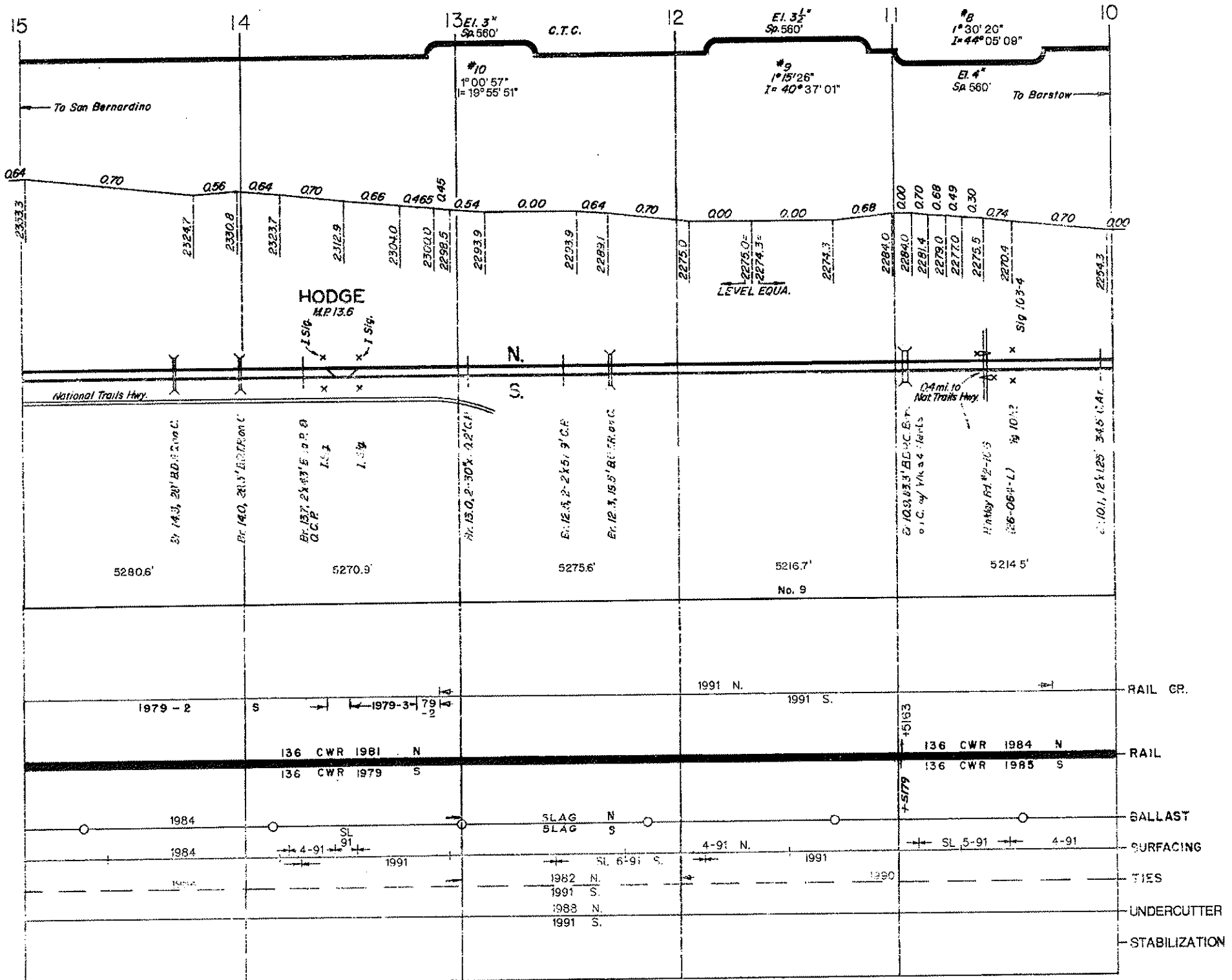
CAJON SUBDIVISION

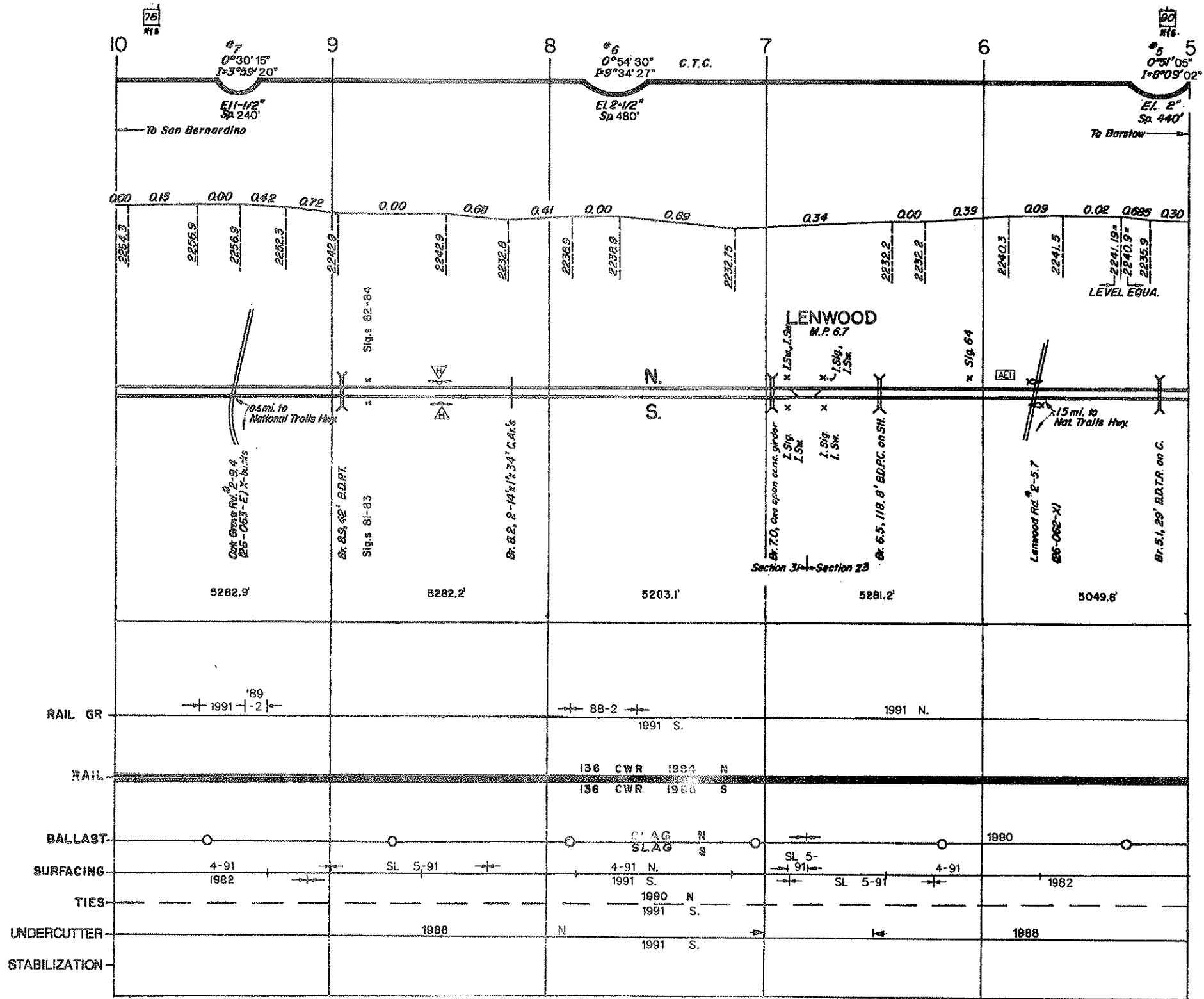




REVISED FEB. 1992

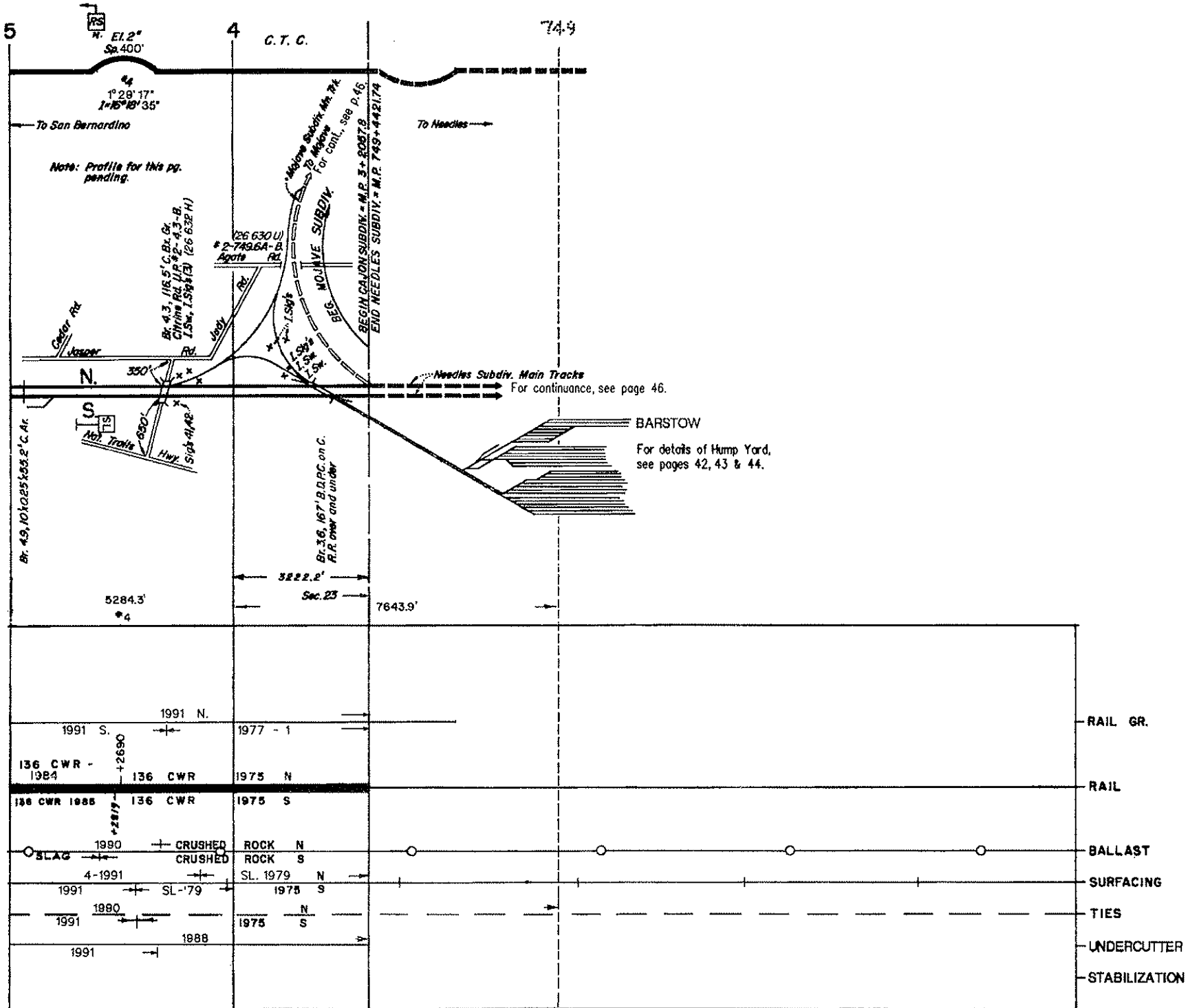
CAJON SUBDIVISION





REVISED FEB. 1992

CAJON SUBDIVISION



Intentionally Blank

Cajon Subdivision

Barstow (M.P. 3.39) to San Bernardino (M.P. 82.2)